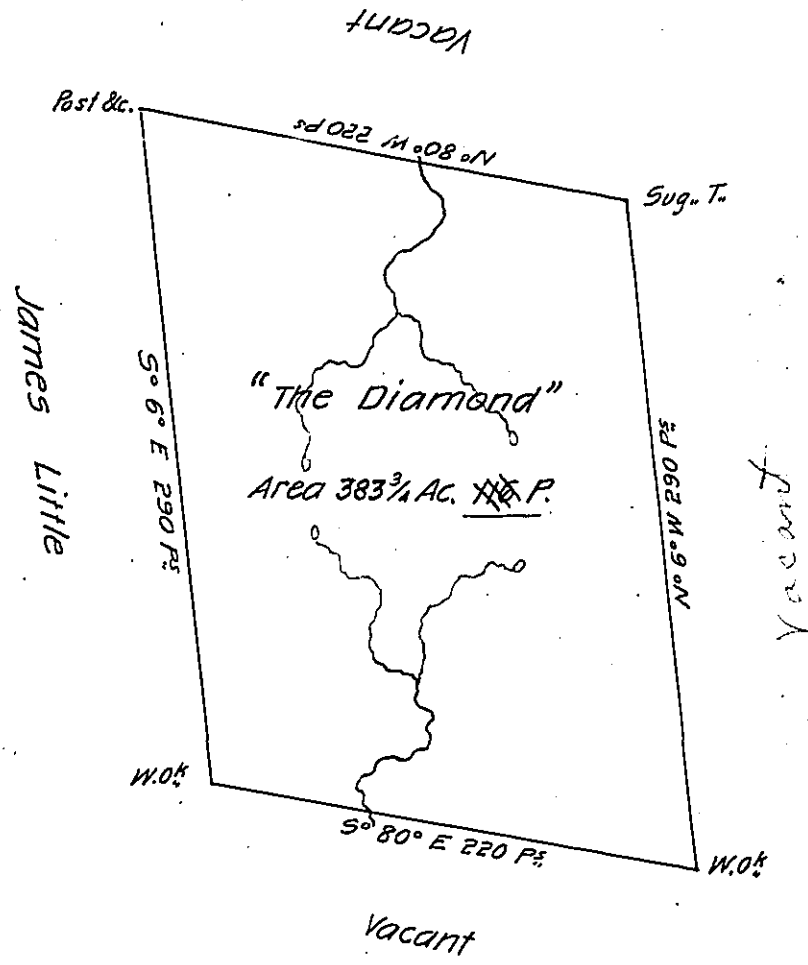


Hanover
BEAVER



A Draught of a Survey called "The Diamond" situate on the Waters of
 Traverse C^{ts} in Washington County, containg 383 Ac^s 116 P^s strict Measure executed Decem^r
 ye 29th 1785 for Walter Buchanon Ass^{es} of W^m White in consequence of a Certif^l for
 400 Ac^s granted to s^d White by the Commiss^{es} appointed by Virg^a to adjust the
 claims to unpatented Lands in the Counties Monong^a Yong^a & Ohio and duly
 entered with the County Surv^r as appears from the List of Entries trans-
 mitted from ye Surv. Gen^{ls} Office

Ent^d 22^d Ap^l 1780. Ret^d 15 May 1787

Presley Nevill D.S

Jn^o Lukens Esq^r S. G^l

IN TESTIMONY that the above is a copy of the original remaining on file in
 the Department of Internal Affairs of Pennsylvania, made
 conformably to an Act of Assembly approved the 16th day of
 February, 1833, I have hereunto set my Hand and caused
 the Seal of said Department to be affixed at Harrisburg,
 this fifteenth day of February 1904.

Joseph P. Brown
 Secretary of Internal Affairs.